



COMBINED SUPERIOR FIRE RESISTANCE AND HIGH VOLUME DOCUMENT STORAGE

Ideal for protecting large volumes of high-risk documents from the significant and increasing risk of fire



DPC

FIRE-RESISTANT DOCUMENT PROTECTION

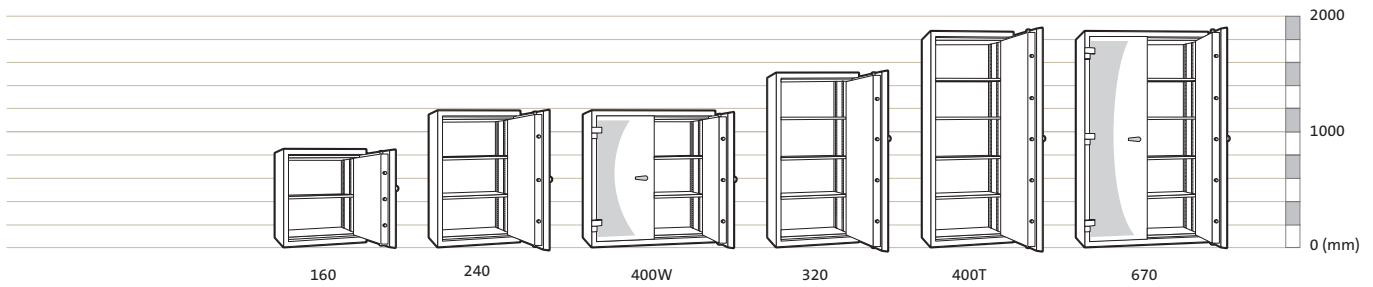


UL 72
Class 350
2hr

KEY FEATURES

- High capacity storage solution with fire protection, ideal for office environments such as banks and financial institutions
- Certified by Underwriter's Laboratories according to UL 72 Class 350 for up to 120 minutes fire protection
- Automatic mechanism to ensure bolts are in place and able to resist fire whenever the door is closed
- Interlocking door system on double door models to prevent the cabinet from being left open
- Available in six high-capacity sizes from 160 to 670 litres
- EN 1300 Class A certified key lock fitted as standard
- Dual locking or single electronic or manual combination locks available at additional costs
- Anchoring kit to fix the safe on the floor and prevent from unauthorised removal available on request
- Shelf/shelves supplied as standard
- Optional internal fittings available including pull out file frames and lockable drawers and cupboards
- RAL 7035 body & RAL 7016 facia panel

PRODUCT SPECIFICATIONS



Model	External Height (mm)	External Width* (mm)	External Depth** (mm)	Internal Height (mm)	Internal Width (mm)	Internal Depth (mm)	Volume (Litres)	Weight (kg)	No. of Doors	No. of Shelves
160	859	759	605	700	600	382	160	235	1	1
240	1209	759	605	1050	600	382	240	315	1	2
400W	1209	1160	605	1050	1000	382	401	500	2	2
320	1559	759	605	1400	600	382	321	395	1	3
400T	1909	759	605	1750	600	382	401	470	1	4
670	1909	1160	605	1750	1000	382	670	650	2	4

*Projection of hinge (27mm) not included. **Projection of handle (54mm) not included

LOCK OPTIONS

Fitted with a Mauer 71111A key lock as standard. Dual locking or single electronic or manual combination locks are available at additional costs.

FINISH

- Body & Interior: RAL 7035 Silver Grey
- Facia Panel: RAL 7016 Anthracite Grey
- Handle: Black and Silver
- Escutcheon: Black

RANGE OF CUSTOMISABLE FITTINGS FOR ULTIMATE FLEXIBILITY

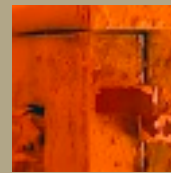
A wide variety of optional internal fittings ensures you can customise the cabinet to your specific needs. Each cabinet is equipped with a number of standard shelves (see table above). The underside of each shelf has been developed to allow front loading of A4 filing pockets to be suspended below.

OPTIONAL FITTINGS INCLUDE:

- Adjustable pull-out filing frames to accommodate a variety of file sizes and orientations
- Lockable cupboards - 300mm high (side by side for double door models)
- Lockable drawers for added protection - 80mm high (half width for double door models)
- Pull-out trays for smaller items - 60mm high

ADVANCED RESISTANCE TESTING FOR TOTAL PEACE OF MIND

To ensure you benefit from advanced fire resistance, the DPC range is subjected to an extensive fire testing process that consists of placing the cabinets in a furnace, heating it to a temperature of 1000°C or more for two hours, and analysing the internal temperature both during furnace heating and the cooling down process once the furnace burners have been turned off. In addition, UL also includes the following measures in its fire endurance test to ensure superior resistance:



FURNACE COOLING OR "SOAK OUT"

to replicate the conditions experienced when a fire burns out. After the fire has been extinguished, it is not possible to retrieve your information immediately. Hot rubble continues to heat the cabinet, it is therefore important that your cabinet is designed to withstand such conditions.

RAPID HEATING

to simulate explosion testing at all levels of certification. Rapid heating occurs where fire transits a building quickly so the cabinet can suddenly be subjected to extremely high temperatures. This "explosion" or "shock" test as it is sometimes known, simulates this scenario. Safes not tested in this way may rupture under such conditions leading to loss of contents.

www.chubbsafes.com